

Visionary developers behind county's condominium boom

By MARILYN BOWDEN

The residential condo boom playing out all around the county has its roots in the work of a handful of visionary developers, Miamians say.

Jorge Perez, chairman and CEO of The Related Group of Florida, received several nominations.

"They have done more in the past five years than any other developer here," said Monte Kane, principal of Kane & Co.

"Related," said Edgar Jones, senior director of Florida operations, "has had a significant impact on residential development in this community."

Related's high-rise condominiums in the area include Murano at Portofino, Portofino Towers, The Mark on Brickell, Yacht Club at Portofino, and Ocean I, II and III on Sunny Isles Beach.

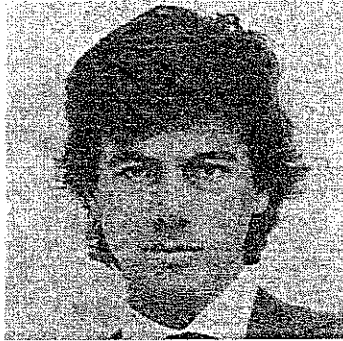
Among its current projects are Aventura Marina and The Venture in Aventura, Icon and Murano Grande in South Beach, and The Loft Downtown, One Miami and The Plaza downtown. After that, Apogee on South Beach and Ocean V, VI and VII are on the drawing board.

Several people also nominated **Ugo Colombo**, CEO of CMC Group, for his outstanding condo designs.

"If you look at the skyline from Brickell to Coral Gables, and now Coconut Grove and Aventura," said William Holly of Holly Real Estate, "the premiere residential condominiums are all by Ugo Colombo. He has literally changed the skyline of Miami and brought a new mark of quality and emphasis on design to our community."

Mr. Colombo, who came to Miami from his native Italy in the early 1990s, is best known for his Brickell Avenue condos, Bristol Tower and Santa Maria, and Porto Vita in Aventura, a joint venture with Turnberry Associates.

His current plans include a two-tower, 48-story condo-hotel complex at the site of the current Dupont Plaza where the Miami River meets Biscayne Bay - a



Ugo Colombo: 'Premiere residential condominiums are by Ugo Colombo,' says William Holly.

The BEST of MIAMI 04
Leaders in the Condo Boom

joint venture with the Lionstone Group, current owner of the Dupont - and a \$100 million condominium high-rise in Coconut Grove.

Swire Properties, which continues to develop condominiums on Brickell Key, is a pioneer in condo living in Miami, Mr. Kane said.

The international company, based in Hong Kong, has sold more than 1,000 residential units on the islet. Its most recent residential tower is the 284-unit Carbonell.

Swire is a joint-venture partner with Fortune International Realty in the development Jade Residences, a 340-unit condo on Brickell Bay Drive.

Mr. Kane also cited New York-based **Millennium Partners**, whose Four Seasons Hotel & Residences is the tallest building south of Atlanta, for raising the bar in luxury condo living.



Jorge Perez: His Related Group 'has had a significant impact.'

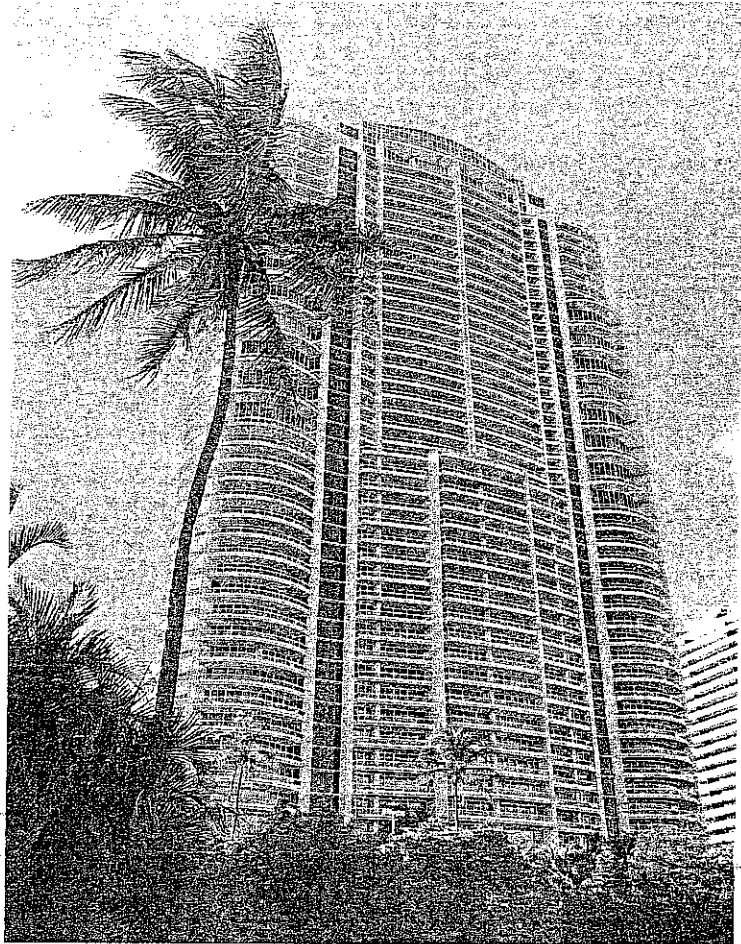


Photo by Lisa Smith

CMC Group, led by Ugo Colombo, developed the Santa Maria condo tower at 1643 Brickell Ave.

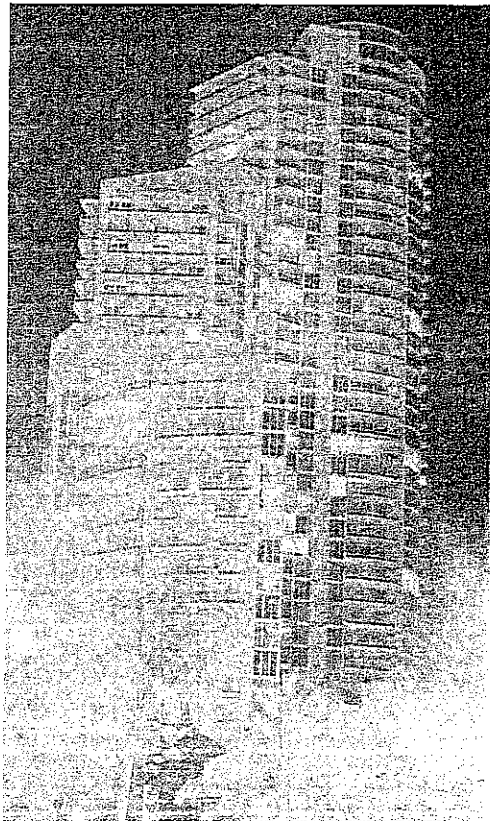


Photo by Lisa Smith

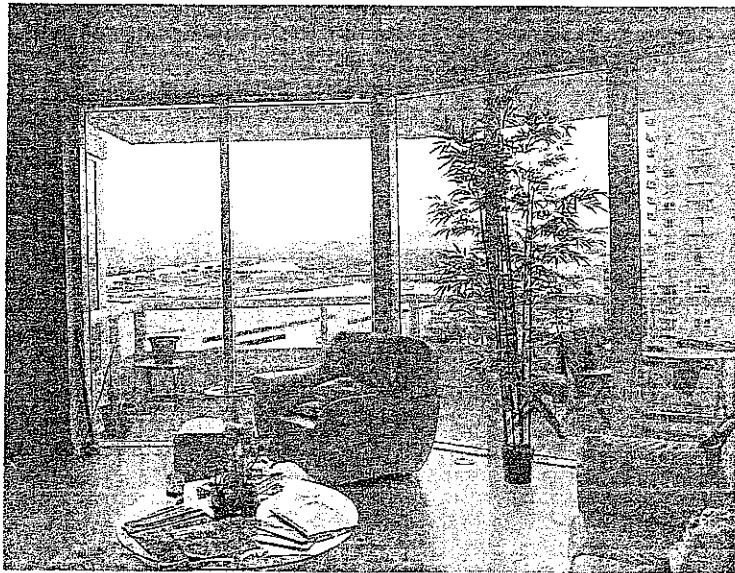


Photo by Lisa Smith

This is a view from the inside of one of the condominiums at Murano at Portofino on South Beach.

Murano at Portofino, 1000 S. Pointe Drive in Miami Beach, is among the Related Group's several high-rise condo towers in the county.